

DUBAI CREEK HARBOUR

CREEK BEACH

LOTUS



EMAAR



Dubai Creek Harbour

THE WORLD OF TOMORROW

Dubai Creek Harbour is at the heart of our bold new vision for Dubai. The eight square kilometre waterfront destination is bound to push the frontiers of architecture, design and quality of life.



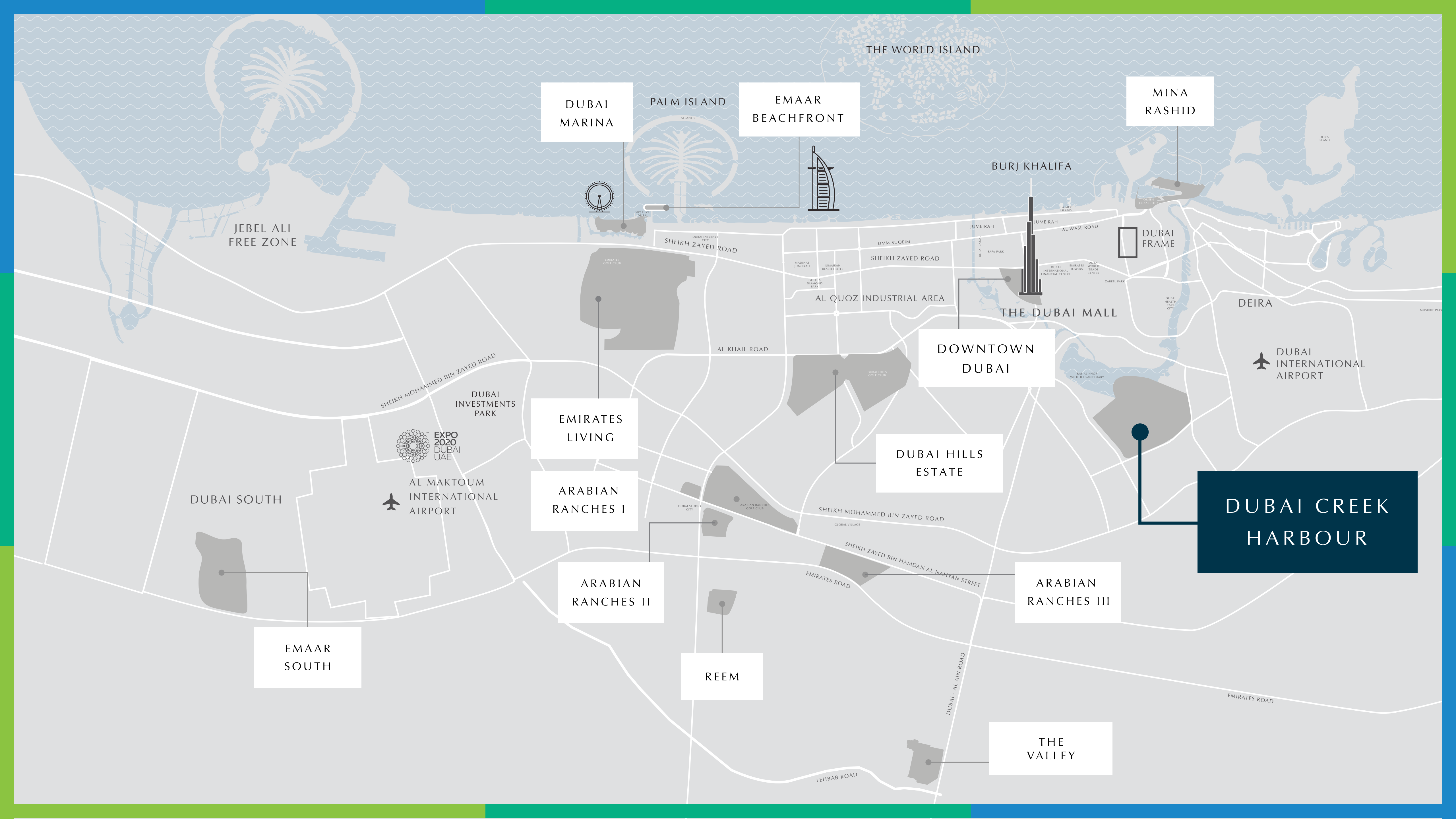
10 Mins from
Burj Khalifa



15 Mins from
Dubai Int'l Airport



Wildlife Sanctuary
Home of Pink Flamingos



DUBAI
MARINA

PALM ISLAND

EMAAR
BEACHFRONT

THE WORLD ISLAND

MINA
RASHID

JEBEL ALI
FREE ZONE

BURJ KHALIFA

DUBAI
FRAME

DEIRA

DUBAI
INTERNATIONAL
AIRPORT

DOWNTOWN
DUBAI

THE DUBAI MALL

EMIRATES
LIVING

ARABIAN
RANCHES I

DUBAI HILLS
ESTATE

DUBAI CREEK
HARBOUR

DUBAI SOUTH

EXPO
2020
DUBAI
UAE
AL MAKTOUM
INTERNATIONAL
AIRPORT

ARABIAN
RANCHES II

REEM

ARABIAN
RANCHES III

EMAAR
SOUTH

THE
VALLEY

CREEK BEACH

Where The City Meets The Beach

Creek Beach is Dubai's first-of-its-kind urban beach in the middle of Dubai Creek Harbour. Located along the historic Dubai Creek, Creek Beach is conceived to afford you the ultimate family-friendly retreat.

From 700 metres of pristine white sands to the infinity pool and spectacular sunset views, this is paradise reborn.



LOTUS AT CREEK BEACH

A Sense Of Belonging

Lotus is a place designed to enhance your life and expand it far beyond the confined walls of your home. From a shared sense of belonging, connecting, playing and relaxing, this warm and welcoming residential cluster turns into a living organism: a community.



Location

THE CITY ON YOUR DOORSTEP

Boasting an enviable location just minutes away from Dubai's most exciting places, Lotus offers residents the best of urban living in a scenic destination.



Breathtaking Sunset Views



5 Mins from Creek
Marina Yacht Club



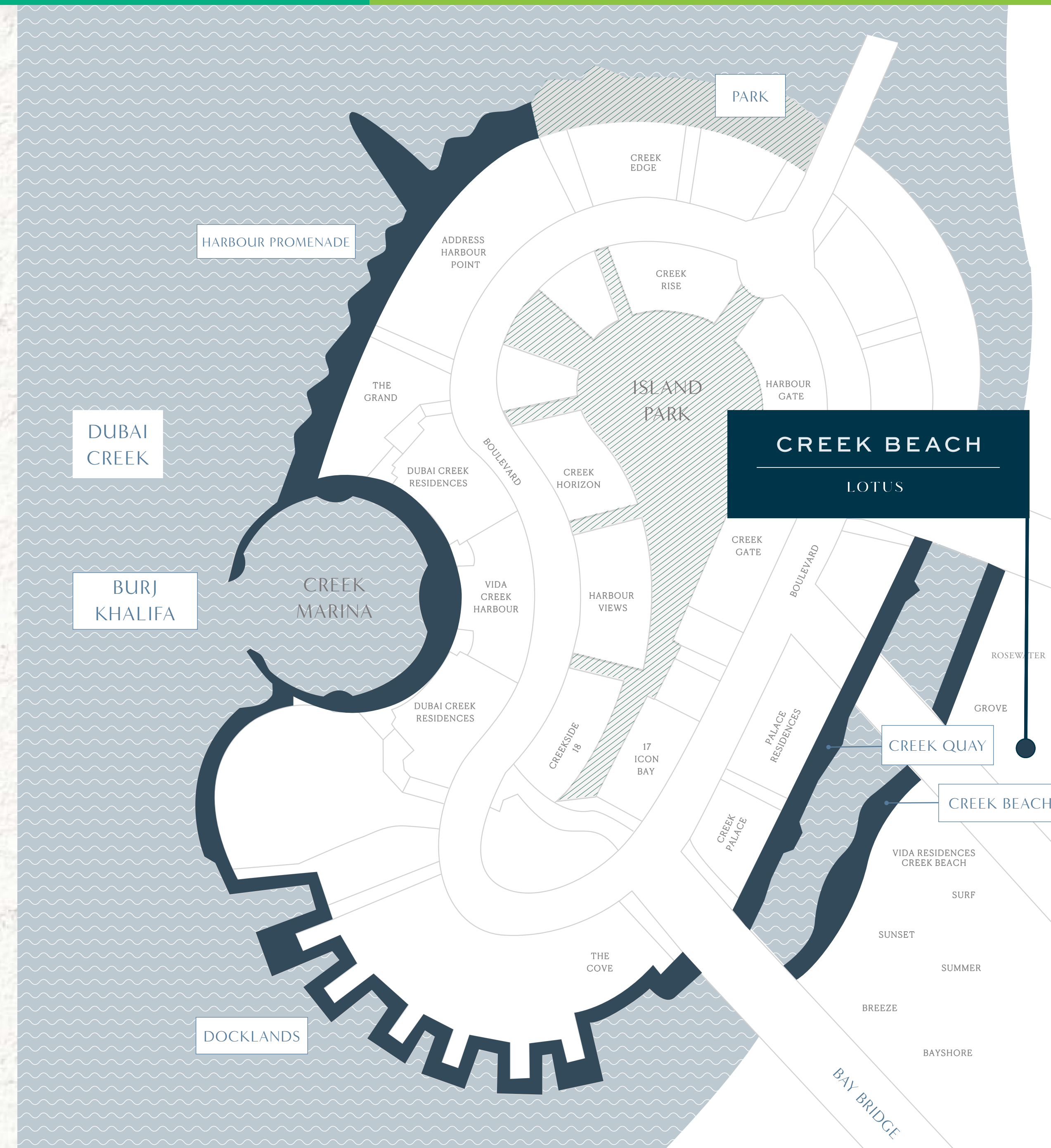
Licensed Bars
& Restaurants



Dining at the Waterfront Vida Hotel



Proximity to a 700-Metre Beach





Lotus at Creek Beach

AN URBAN OASIS

In the heart of the idyllic Creek Beach, the four stylish apartment buildings are located around an inner plaza buzzing with life where residents can come together, share moments, and make memories.

This impressive contemporary development in such a desirable location is destined to be nothing less than an urban oasis.



Lotus at Creek Beach

CONVENIENTLY CONNECTED

Lotus is located minutes away from the pristine Creek Beach, where you can enjoy the serenity of the natural surroundings.

It is also conveniently close to all primary business, shopping and entertainment destinations in Dubai, so you'll find peace at home without being too far from all the action.

The artful balance between work and life is struck in the harmony of Lotus.



AN EXCITING NEIGHBOURHOOD

Lotus is brimming with life, and positive energy. By enhancing a social life in a tight-knit community, this family-friendly residential cluster inspires a life of joy and harmony. The surrounding prominent amenities, combined with the incredible location, promise a future of prosperity and spectacular quality of life.





Interiors

OPTIMISED QUALITY OF LIFE

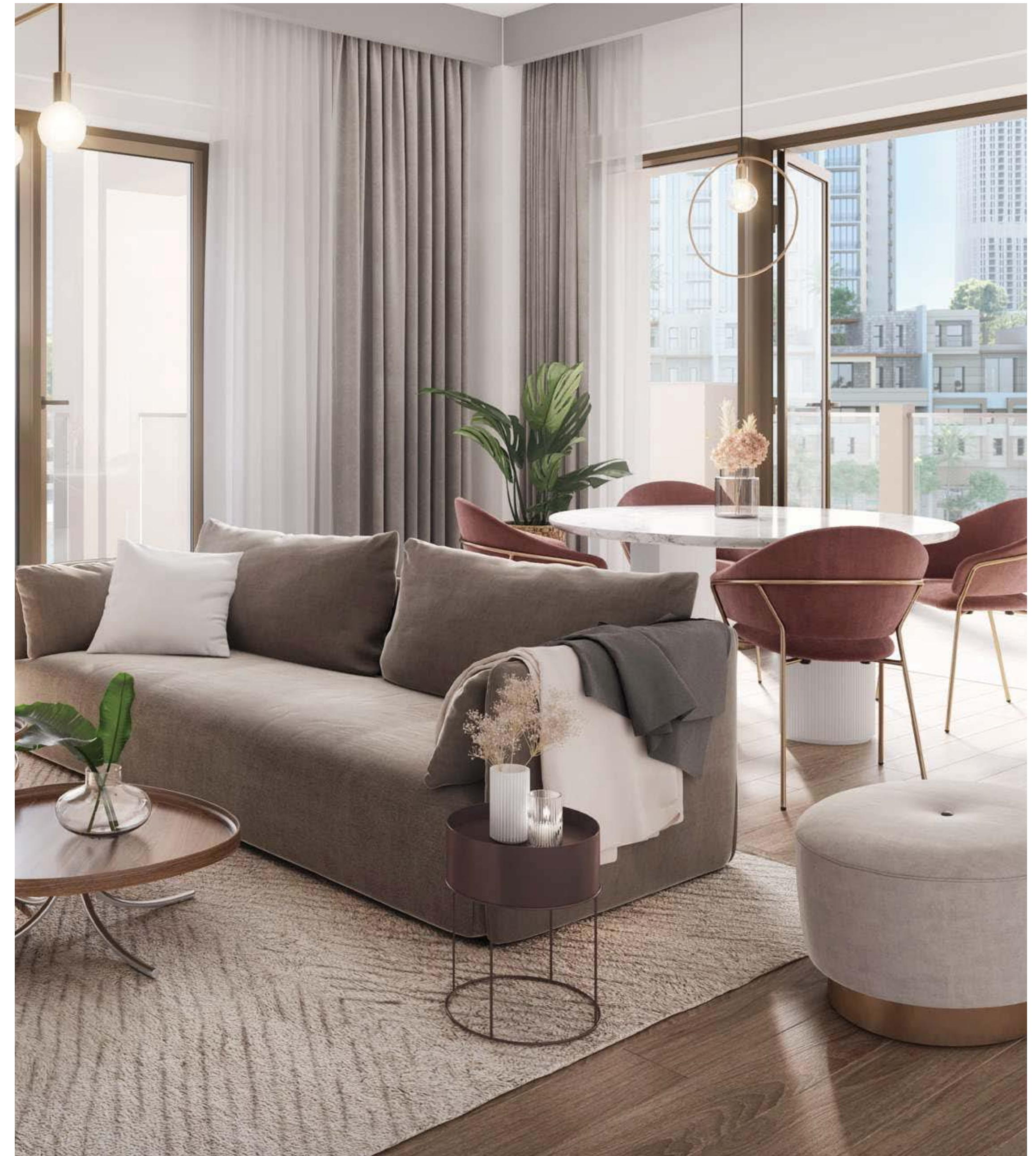
Lotus offers a wide variety of stunning 1, 2 & 3-bedroom residences with an exquisite atmosphere of contemporary interior inviting residents to relax and spend quality time with family and friends.

Carefully considered interiors have been selected to optimise convenience and quality of life, creating a stylish, living space that is perfect for relaxing.

CURATED MODERN LIFESTYLE

Each residence has been conceived specifically to respond to the demands of a modern urban lifestyle.

Featuring expansive windows and balconies with abundant natural light, the contemporary design combines stylish architecture and high-quality materials to deliver homes that balance sophisticated style with everyday functionality.





LIFE-ENHANCING AMENITIES

Created to encourage long strolls along the streets of Creek Beach, Lotus boasts an array of amenities right at your doorstep. From happy days cooling off in the shimmering pool, to active afternoons at the playground with the little ones, every day is a new adventure.



Community Pool
& Kids Pool*



Barbecue
Facilities



Fully-Equipped
Gym*



Multi-Purpose
Room



Town
Centre



Outdoor
Play Area

GLOBAL LIFESTYLE DEVELOPER

An undisputed leader in the global real estate market, Emaar has grown over the years to become the largest real estate developer outside of mainland China. You will be investing with one of the most respected brands in the world.

NET PROFIT	REVENUE	MARKET CAP
AED	AED	AED
3.8BN	28.27BN	40BN
AS OF 31 DECEMBER 2021		

RESIDENTIAL UNITS DELIVERED	RESIDENTIAL UNITS UNDER DEVELOPMENT
81,600+	35,200+







CREEK BEACH

LOTUS

FOR MORE INFORMATION PLEASE CONTACT



 +971 55 476 7630
 +971 4 368 7878
 info@afsrealestate.com
 www.afsrealestate.com



 +971 50 674 2020
 +971 4 368 7878
 info@dubricks.com
 www.dubricks.com

EMAAR